

# Instructions: Assembling a Toast Rack



Step 1: Position the first hoop at the end of the two rails.



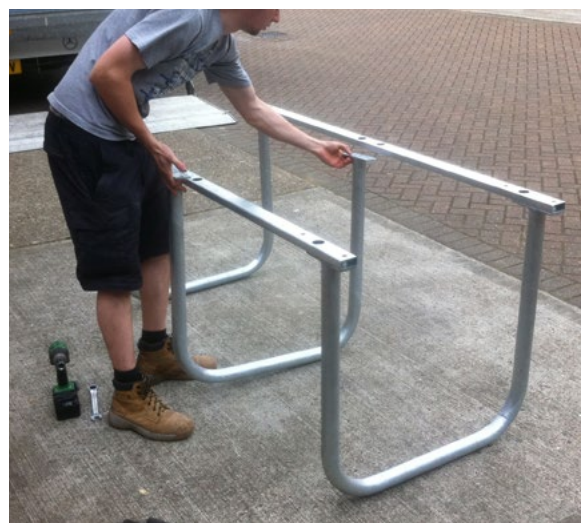
Step 2: Secure with the bolts provided using a 17mm spanner & socket wrench or impact driver.

**Parts included:**

- Hoops (x3, 4 or 5)
- Rails x2
- Base plates x2
- Bolts and nuts
- End plugs

**Tools required:**

- 17mm socket wrench or impact driver
- 17mm spanner



Step 3: Repeat step 2 with the other end hoop, then proceed with the middle one(s).



Step 4: Tighten all bolts and make sure the racks are secure and do not move.